



Rabbit anti STAT5A (pS780) Polyclonal Antibody

Alternative Name(s): Signal transducer and activator of transcription 5a (STAT5a)

Order Information

- **Description:** STAT5A (pS780)
- **Catalogue:** 500-12074
- **Lot:** See label
- **Size:** 100ug/200ul
- **Host:** Rabbit
- **Clone:** nan
- **Application:** IHC(P), WB, IP
- **Reactivity:** Hu, Ms

ANTIGEN PREPARATION

A synthetic peptide surrounding to the epitope -LDSRL-S-PPAGLF-with phosphorylation sites at Serine 780 of STAT5a protein from human, mouse, rat, chicken dog and bovine origins.

BACKGROUND

STAT proteins (Signal transducer and activator of transcription) belong to a family of cytoplasmic transcription factors that can be phosphorylated by a ligand binding to its cell surface receptor. Activation of STAT5a induces dimerization, nuclear translocation and DNA binding. Stat5A is activated by IL-2, IL-7, IL-15, IL-3, GM-CSF, growth hormone, prolactin, erythropoietin and thrombopoietin; activation and dimerization of Stat5A requires phosphorylation of STATs.

PURIFICATION

The Rabbit IgG is purified by site-modified Epitope Affinity Purification.

FORMULATION

This affinity purified antibody is supplied in sterile Tris-buffered saline (pH7.2) containing antibody stabilizer

SPECIFICITY

This antibody recognizes STAT5a (pS780) with a phosphorylated sites of Ser780. It does not cross-react with non-phosphospecific peptide.

STORAGE

The antibodies are stable for 24 months from date of receipt when stored at -20oC to -70oC. The antibodies can be stored at 2oC-8oC for three month without detectable loss of activity. Avoid repeated freezing-thawing cycles.

APPLICATIONS/SUGGESTED WORKING DILUTIONS*

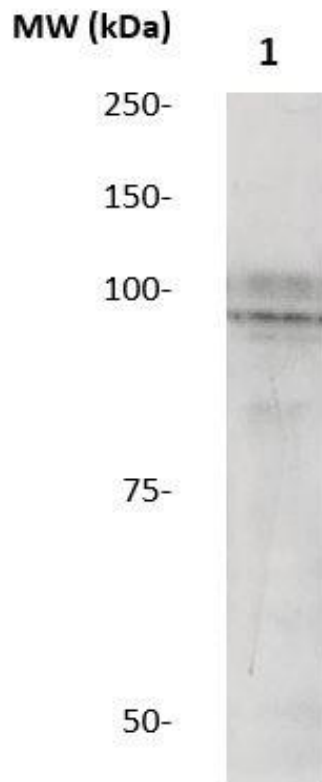
- Western Blot: 0.1-1 µg/ml
- ELISA: 0.01-0.1 µg/ml
- Immunoprecipitation: 2-5 µg/ml
- IHC: 2-10 µg/ml
- Flow cytometry: Not tested
- Molecular Weight: 92.0
- Positive Control: Kidney Tissue
- Cellular Location: Cell Membrane

*Optimal dilutions should be determined by researchers for the specific applications.

FOR RESEARCH USE ONLY.

AbboMax, Inc 2528 Qume Drive, Suite 8, San Jose, California 95131, USA
1 408-573-1898 (Tel). 1 408-573-1858 (Fax). www.abbomax.com info@abbomax.com

DATA ATTACHMENTS



Western Blot: The whole tissue lysate derived from 30 min post-treatment of 200 μ M GH mouse liver was immunoblotted by Rabbit anti STAT5a (pS780) (Cat#500-12074) antibody at 1:500. A major immunoreactive band around ~90kDa was observed.

REFERENCES

FOR RESEARCH USE ONLY.